



TECHNICAL MANUAL

Issuer: ETP Transmission AB	Sign: 	Date: 010802	Edition: 1	Doc. no: 11.020	Page: 1/1
Subject: Mounting/dismantling instructions, tips					

Mounting

Comments to the instruction, which is enclosed with each product.
It is also enclosed under this section.

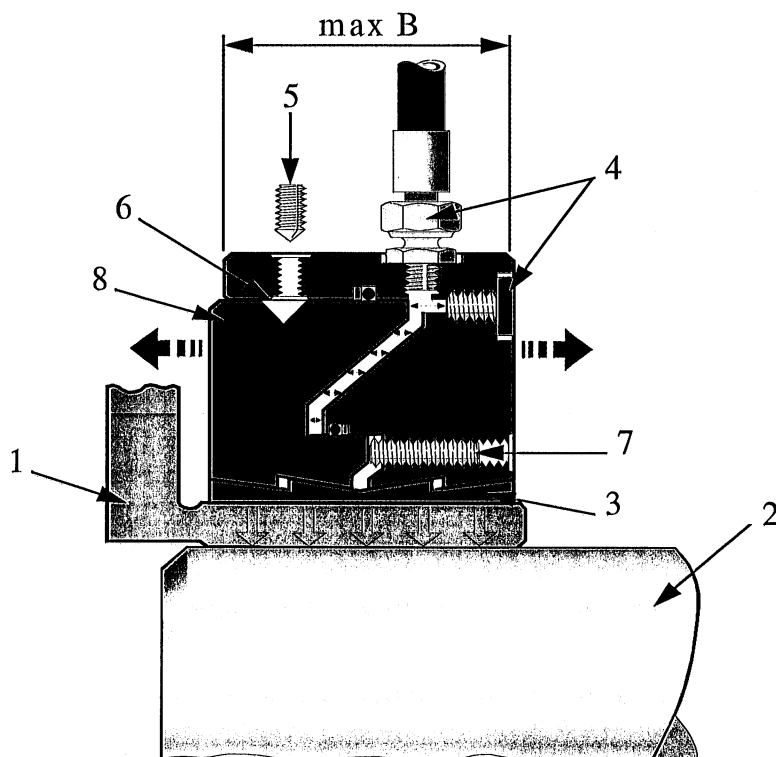
- * For max. torque capacity the contact surfaces between shaft and hollow shaft should be cleaned with a solvent.
- * Oil the outer diameter surface of the hollow shaft. It will make the mounting of ETP-IMPRESS easier.
- * When mounted correctly, the width of ETP-IMPRESS should not exceed the max. value stated on the nameplate. If it does the reason is most likely incorrect tolerances.

Dismantling

- * When dismantling you only need the same pressure as when mounted to move the sleeves, and the locking screw can then be loosened.
- * ETP-IMPRESS should loosen immediately between hollow shaft and shaft when the dismantling procedure has been carried through.
- * Because of the friction resistance around the seals it may be necessary to use the radial dismantling screws. Make sure that the valve on the pump is open when using the dismantling screws, so no pressure is being built up.

See enclosure 1 for complete mounting/dismantling instruction.

Mounting of ETP-IMPRESS



ETP-IMPRESS must only be pressurized when mounted on both hollow shaft (1) **and** solid shaft (2).

1. Put ETP-IMPRESS onto the hollow shaft (1).
The inner ring (3) should be positioned in the centre of the hollow shaft (1) see sketch (A) on the back side. Ensure that the maximum overhang on both sides does not exceed the maximum value (see table).
2. The inner surface of the hollow shaft (1) and the solid shaft (2) should be thoroughly cleaned with a solvent. **NB ! If grease is present on the surfaces the connection can slip.**
3. Push the hollow shaft (1) and solid shaft (2) together.
4. Remove the protective plug from the axial/radial connection (4) and connect the hydraulic pump. (Use normal hydraulic oil in the pump). Max. oil volume, see table on the back.
5. **Ensure that the radial dismantling screws (5) are NOT inplace.**
(These screws (5) are delivered loose and should be kept like that. Only to be used when necessary in the dismantling process).
6. Pressurize up to the prescribed mounting pressure as specified on the ETP-IMPRESS name plate. Check in the meantime that the width of ETP-IMPRESS does not exceed the max width (B), which is also specified on the name plate. Is easily checked with a sliding caliper. If the maximum width (B) is reached before the prescribed mounting pressure, the mounting procedure **must** be stopped. Typically the reason for this is incorrect tolerances. Check the actual shaft diameters/bores. If the maximum width (B) is exceeded the seals in ETP-IMPRESS may be destroyed. NOTE: the dismantling track (6) (under the removed radial dismantling screws (5)) should not be visible when ETP-IMPRESS is pressurized.
Turn the page for cont. instructions !!
7. When the mounting pressure is reached the locking screws (7) should be tightened by hand. Ensure that the mounting pressure is maintained until **all** the locking screws (7) are tightened to a light contact, approx. 5 Nm. Do not release the hydraulic pressure until all the screws (7) are tightened.

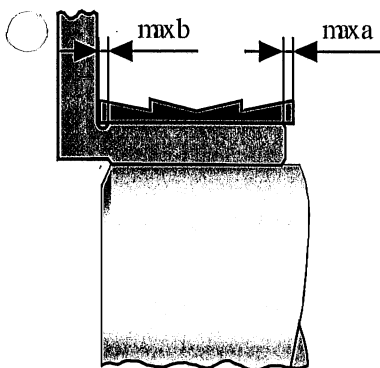
NB: if only one or a few locking screws (7) are tightened when the pressure is released, ETP-IMPRESS will be badly damaged or destroyed.

8. Open the pressure release valve on the pump (the pressure in the hose will disappear). The locking screws (7) now hold ETP-IMPRESS in its mounted position.
9. Disconnect the hydraulic hose and let the oil drain from the connector (4). Insert the protective plug (4) and the locking screw plugs (7).

Dismantling of ETP-IMPRESS

1. Remove the protective plugs for the locking screws (7) and for the radial/axial connection (4). Connect the hydraulic pump.
2. Pressurize ETP-IMPRESS to the mounting pressure which was used to mount the unit or until the locking screws (7) can be loosened. All the locking screws (7) should be loosened by hand equal all around.
3. **Ensure that all the locking screws (7) are protruding approx. 5 mm from the side of ETP-IMPRESS.**
4. With all the locking screws released it is safe to open the valve on the pump and allow the pressurized oil out. Max. oil volume, acc to the table below, must be able to be accomodated when the valve is opened. ETP-IMPRESS will loosen itself after a few seconds.
5. The shaft (2) is now free from the hollow shaft (1).
6. In order to dismantle ETP-IMPRESS from the hollow shaft (1) the two flanges (8) must be pressed together another few millimeters. This should be done with the separate dismantling screws (5). Two or in some cases all four must be used. Remove the protective plugs and insert two screws (5) opposite each other. Tighten the screws in small stages. Check to see if the flanges (8) are pressed together. Let the oil drain for a few seconds as the flanges close together.
7. ETP-IMPRESS is now loose from the hollow shaft (1).
8. Remove the hydraulic hose and the dismantling screws (5) if they have been used. Replace all protective plugs to avoid accidental damage or oil leakage.

Sketch A.



ETP-IMPRESS	a=b=max (mm)	Oil volume max, (l)
100	3	0,05
125	3,5	0,10
165	4	0,21
185	5,5	0,36
200	5,5	0,39
240	7	0,70
260	8,5	0,75

E418-1